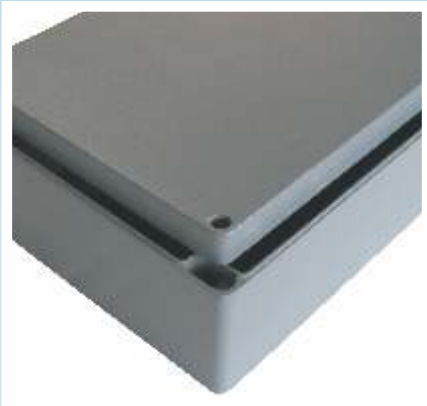


TRIBOX®

ENCLOSURE PROGRAM

ALUMINIUM ENCLOSURES



SIMPLY SOLUTIONS



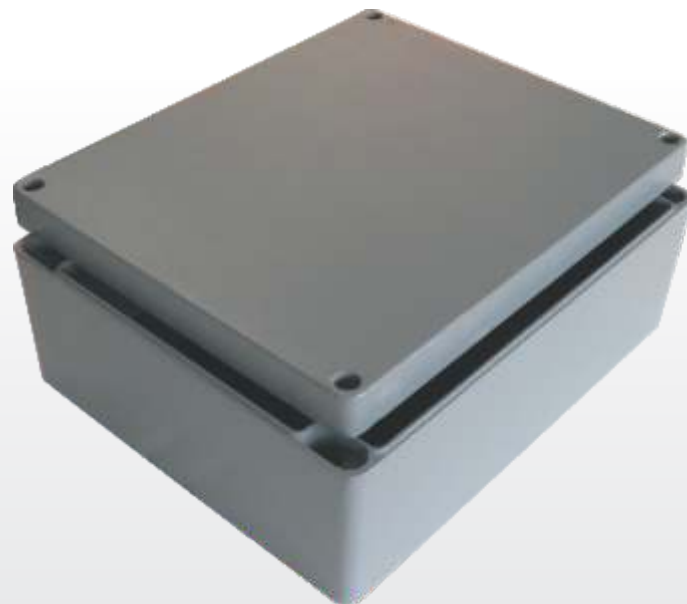
Aluminium Enclosures

TRIBOX®

NEW



Our Aluminium enclosures caters to a market which requires high strength, compact and robust enclosures. We use high quality Aluminium and provide IP 66/67/68 rating along with protection against mechanical impacts IK 09. A high quality gasket, well engineered screw make our Aluminium Enclosures a good solution for all the demand placed on the compact enclosures.



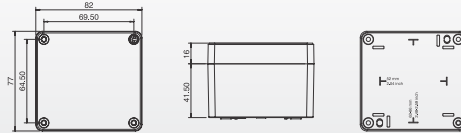
Technical Specifications

Description	Aluminium enclosure
Material & Reference Standard	EN AC 44300, DIN 1706 AlSi12 (Fe)
Colour	RAL 7001 / RAL 7035 optional colour also available on request
Surface Finish	Powder coated / Corrosion protection
LID Screw	Stainless steel 1.4301 (A2) captive type
Gasket Material	Polyurethane
Temperature Resistance (Continuous)	-40 - +70°C
Temperature Resistance (Short time)	-60 - +160°C
Ingress Protection	IP 66/67/68 as per IEC 60529
Impact Resistance	IK 09 as per IEC 62262

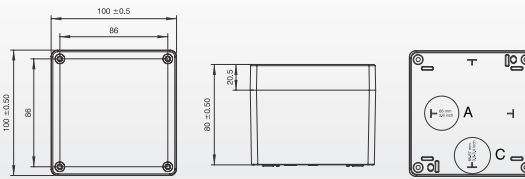
TRIBOX® Aluminium Enclosure Series



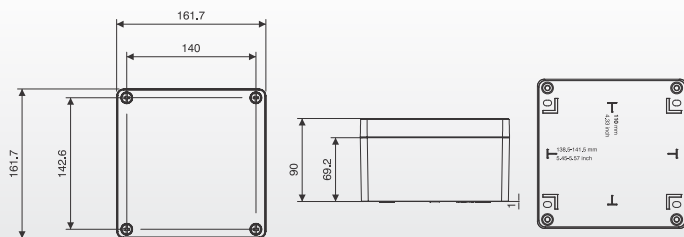
Article No.	Dimensions
01 17 05400	82 x 77 x 57 mm



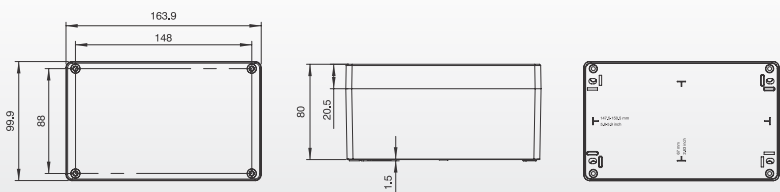
Article No.	Dimensions
01 17 06911	100 x 100 x 80 mm



Article No.	Dimensions
01 17 06105	160 x 160 x 91 mm

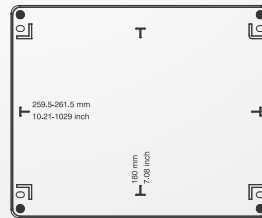
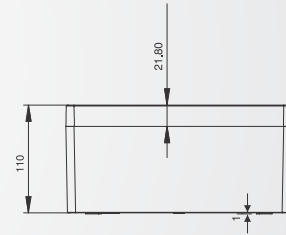
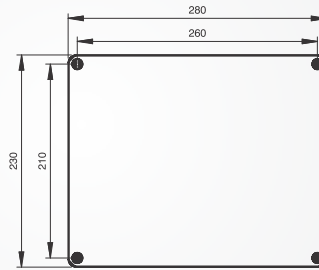


Article No.	Dimensions
01 17 06912	164 x 100 x 80 mm





Article No.	Dimensions
01 17 06095	280 x 230 x 111 mm



Trinity Touch Pvt. Ltd.

www.trinitytouch.com

INDIA

Delhi: Corporate Office

D-10, Defence Colony, New Delhi 110024 INDIA

Tel: +91.11.71200900

Fax: +91.11.71200998

E-mail: postmaster@trinitytouch.com

Bangalore

2nd Floor, Umiya Land Mark 10/7, Lavelle Road, Bangalore 560001 INDIA

Tel: +91.80.30454200

Pune

'Devi House', 3rd Floor, Plot No.37, CTS No.1576, Shivaji Nagar,

Behind Hotel Pride Executive, Pune 411005 INDIA

Tel: +91.20.71999600

Works & Warehouse

Prithla-Dudhola road, Dudhola Distt. Palwal 121102, Haryana INDIA

Tel: +91.1275.711500

E-mail: sales@trinitytouch.com

Trinity Touch (EUROPE) Ltd.

www.trinitytouch.co.uk

UK

Unit-L, Tyson Courtyard, Weldon South Industrial Estate, Corby, Northants, N N18 8AZ, UK

Tel: +44 (0) 1536 400 641

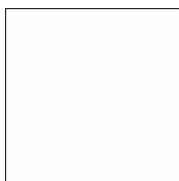
Fax: +44 (0) 1536 268 043

E-mail: gbsales@trinitytouch.com

Trinity Touch (South East Asia) Pte. Ltd.

SINGAPORE

No.72, Eunos Ave 7, #06-03 Singapore Handicrafts Building, Singapore 409570



Scan & Save
Catalog in PDF

Distributed by :



Enclosure Program

Thermoplastic Enclosures



TRIBOX™

CE **RoHS** ✓

“Simply Solutions”

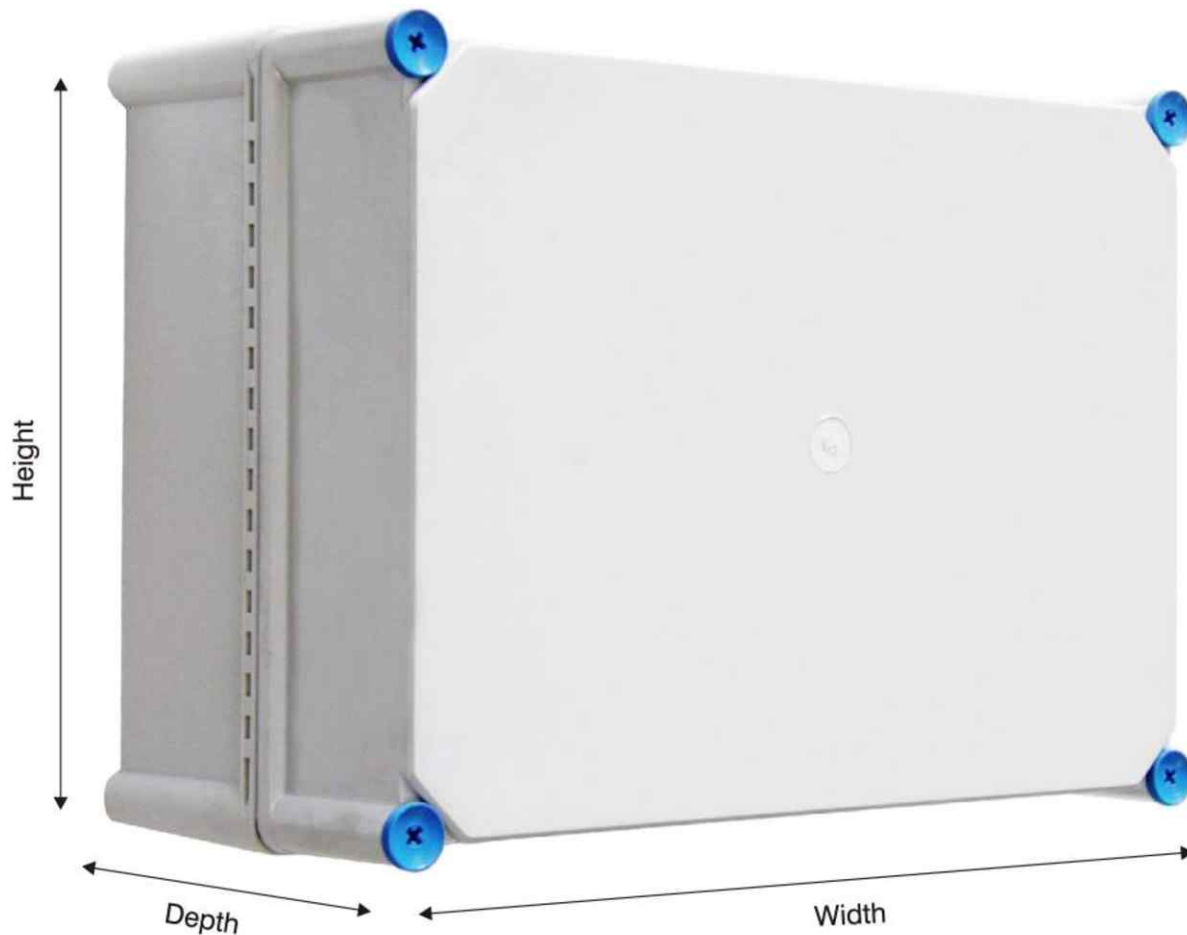




Thermoplastic Enclosures

TRIBOX™

Our Basic and Heavy Series caters to a market which requires compact and robust enclosures. We use a high quality ABS and Polycarbonate material and provide Ingress Protection IP 66/67 along with protection against mechanical impacts IK 07 for ABS and IK 08 for Polycarbonate. A High quality gasket, well engineered screws and tested box design make our Basic & Heavy series a good solution for all the demand placed on compact enclosures.



IP 66/67  

Benefits

- Easy machining with normal tools.
- Easy colouring through pigmentation.
- Low weight.
- Good resistance to chemical attack.
- Excellent insulating properties.

Summary of **TRIBOX™** Series

Box Size	Dimension (W x H x D) mm	Material
Basic 0808 + Basic 0808 with K.O.	85 x 83 x 60	ABS or Polycarbonate
Basic 1010 + Basic 1010 with K.O.	102 x 100 x 60	ABS or Polycarbonate
Basic 1308	130 x 80 x 60	ABS or Polycarbonate
Basic 1313	130 x 130 x 75	ABS or Polycarbonate
Basic 1808	180 x 80 x 85	ABS or Polycarbonate
Basic 1813	180 x 130 x 100	ABS or Polycarbonate
Basic 1818	180 x 180 x 100	ABS or Polycarbonate
Basic 2708	270 x 80 x 85	ABS or Polycarbonate
Heavy 2819 13	280 x 190 x 130	ABS or Polycarbonate
Heavy 2819 17	280 x 190 x 170	ABS or Polycarbonate
Heavy 2828 13	280 x 280 x 130	ABS or Polycarbonate
Heavy 2828 17	280 x 280 x 175	ABS or Polycarbonate
Heavy 3819 13	380 x 190 x 130	ABS or Polycarbonate
Heavy 3828 13	380 x 280 x 130	ABS or Polycarbonate
Heavy 3828 17	380 x 280 x 175	ABS or Polycarbonate
Heavy 5638 18	560 x 380 x 180	ABS or Polycarbonate

Technical Information

Property	ABS	Polycarbonate
Ingress Protection(EN 60529)	IP 66/67	IP 66/67
Impact Resistance(EN 62262)	IK 07	IK 08
Temperature Range -Continuous	-20 to +60°C	-40 to +80°C
Electrical Insulation	Insulated	Insulated
Enclosure flammability rating	UL 94-HB	UL 94-V2
Glow wire test	650°C	960°C
Non-toxicity	Halogen free	Halogen free
UV resistance		500 Hrs (ISO 4892-2)
Conformity to standards		
Empty enclosure for low voltage switchgear	Y	IEC 62208
RoHS	Y	Y
CE		Y

Data subject to change without prior notice

Special Feature

Combination Units

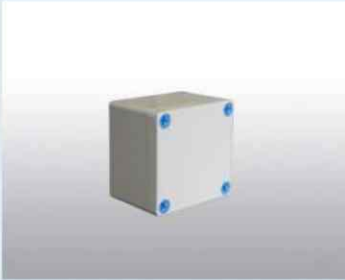
A bigger range and size can be achieved by using specially engineered combination system made by combining **TRIBOX** enclosures. It comprises of special set of heavy series **TRIBOX** enclosures.

The modular system is designed to achieve IP 65 protection which makes the system fit for outdoor use. Our modular system of enclosures is fit for use in low voltage switch gear.

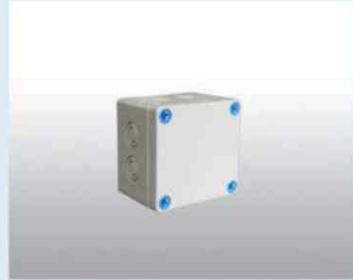


TRIBOX™ BASIC SERIES

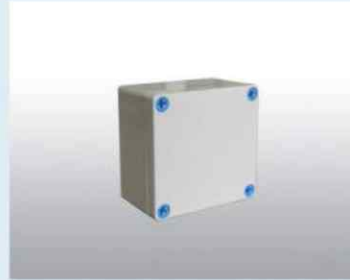
BASIC 0808 06G



BASIC 0808 06G (With K.O.)



BASIC 1010 06G



BASIC 1010 06G (With K.O.)



BASIC 0808 06T



BASIC 0808 06T (With K.O.)



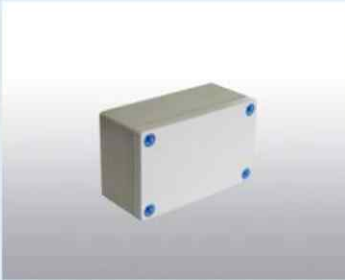
BASIC 1010 06T



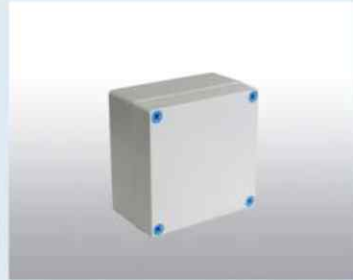
BASIC 1010 06T (With K.O.)



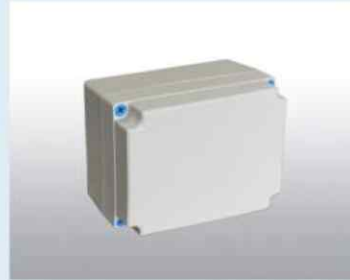
BASIC 1308 G



BASIC 1313 G



BASIC 1813 G



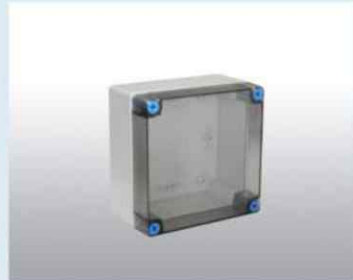
BASIC 1818 G



BASIC 1308 T



BASIC 1313 T



BASIC 1813 T



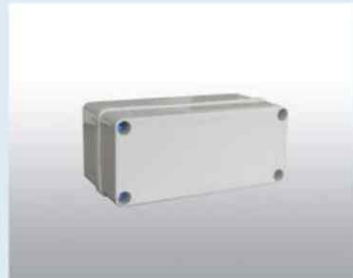
BASIC 1818 T



BASIC 2708 09G



BASIC 1808 09G



TRIBOX™ BASIC SERIES

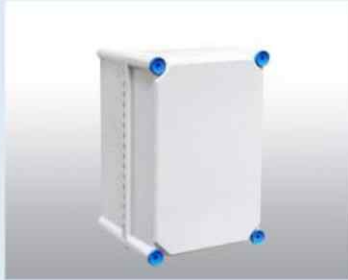
Type	Article No.	Size (H X W X D) mm	 Mounting Plate	 Mounting Clamp	 Hinge	 Cover Screw
BA-ABS 0808 06G	01 17 03577	85 X 83 X 60	01 17 03601	01 17 03606	01 17 00624	01 17 00910
BA-PC 0808 06G	01 17 03578	85 X 83 X 60	01 17 03601	01 17 03606	01 17 00624	01 17 00910
BA-ABS 0808 06T	01 17 03579	85 X 83 X 60	01 17 03601	01 17 03606	01 17 00624	01 17 00910
BA-PC 0808 06T	01 17 03580	85 X 83 X 60	01 17 03601	01 17 03606	01 17 00624	01 17 00910
BA-ABS 0808 06G (With K.O.)	01 17 03581	85 X 83 X 60	01 17 03601	01 17 03606	01 17 00624	01 17 00910
BA-PC 0808 06G (With K.O.)	01 17 03582	85 X 83 X 60	01 17 03601	01 17 03606	01 17 00624	01 17 00910
BA-ABS 0808 06T (With K.O.)	01 17 03583	85 X 83 X 60	01 17 03601	01 17 03606	01 17 00624	01 17 00910
BA-PC 0808 06T (With K.O.)	01 17 03584	85 X 83 X 60	01 17 03601	01 17 03606	01 17 00624	01 17 00910
BA-ABS 1010 06G	01 17 03585	102 X 100 X 60	01 17 03602	01 17 03607	01 17 00624	01 17 00910
BA-PC 1010 06G	01 17 03586	102 X 100 X 60	01 17 03602	01 17 03607	01 17 00624	01 17 00910
BA-ABS 1010 06T	01 17 03587	102 X 100 X 60	01 17 03602	01 17 03607	01 17 00624	01 17 00910
BA-PC 1010 06T	01 17 03588	102 X 100 X 60	01 17 03602	01 17 03607	01 17 00624	01 17 00910
BA-ABS 1010 06G (With K.O.)	01 17 03589	102 X 100 X 60	01 17 03602	01 17 03607	01 17 00624	01 17 00910
BA-PC 1010 06G (With K.O.)	01 17 03590	102 X 100 X 60	01 17 03602	01 17 03607	01 17 00624	01 17 00910
BA-ABS 1010 06T (With K.O.)	01 17 03591	102 X 100 X 60	01 17 03602	01 17 03607	01 17 00624	01 17 00910
BA-PC 1010 06T (With K.O.)	01 17 03592	102 X 100 X 60	01 17 03602	01 17 03607	01 17 00624	01 17 00910
BA-ABS 1308G	01 17 00571	130 X 80 X 60	01 17 00608	01 17 00609	01 17 00624	01 17 00910
BA-PC 1308G	01 17 00594	130 X 80 X 60	01 17 00608	01 17 00609	01 17 00624	01 17 00910
BA-ABS 1308T	01 17 00586	130 X 80 X 60	01 17 00608	01 17 00609	01 17 00624	01 17 00910
BA-PC 1308T	01 17 00602	130 X 80 X 60	01 17 00608	01 17 00609	01 17 00624	01 17 00910
BA-ABS 1313G	01 17 00568	130 X 130 X 75	01 17 00610	01 17 00611	01 17 00624	01 17 00911
BA-PC 1313G	01 17 00591	130 X 130 X 75	01 17 00610	01 17 00611	01 17 00624	01 17 00911
BA-ABS 1313T	01 17 00583	130 X 130 X 75	01 17 00610	01 17 00611	01 17 00624	01 17 00911
BA-PC 1313T	01 17 00599	130 X 130 X 75	01 17 00610	01 17 00611	01 17 00624	01 17 00911
BA-ABS 1808 09G	01 17 03593	180 X 80 X 85	01 17 03603	01 17 03608	01 17 00625	01 17 00911
BA-PC 1808 09G	01 17 03594	180 X 80 X 85	01 17 03603	01 17 03608	01 17 00625	01 17 00911
BA-ABS 1808 09T	01 17 03595	180 X 80 X 85	01 17 03603	01 17 03608	01 17 00625	01 17 00911
BA-PC 1808 09T	01 17 03596	180 X 80 X 85	01 17 03603	01 17 03608	01 17 00625	01 17 00911
BA-ABS 1813G	01 17 00570	180 X 130 X 100	01 17 00612	01 17 00613	01 17 00624	01 17 00911
BA-PC 1813G	01 17 00593	180 X 130 X 100	01 17 00612	01 17 00613	01 17 00624	01 17 00911
BA-ABS 1813T	01 17 00585	180 X 130 X 100	01 17 00612	01 17 00613	01 17 00624	01 17 00911
BA-PC 1813T	01 17 00601	180 X 130 X 100	01 17 00612	01 17 00613	01 17 00624	01 17 00911
BA-ABS 1818G	01 17 00572	180 X 180 X 100	01 17 00614	01 17 00615	01 17 00624	01 17 00911
BA-PC 1818G	01 17 00595	180 X 180 X 100	01 17 00614	01 17 00615	01 17 00624	01 17 00911
BA-ABS 1818T	01 17 00587	180 X 180 X 100	01 17 00614	01 17 00615	01 17 00624	01 17 00911
BA-PC 1818T	01 17 00603	180 X 180 X 100	01 17 00614	01 17 00615	01 17 00624	01 17 00911
BA-ABS 2708 09G	01 17 03597	270 X 80 X 85	01 17 03604	01 17 03609	01 17 00625	01 17 00911
BA-PC 2708 09G	01 17 03598	270 X 80 X 85	01 17 03604	01 17 03609	01 17 00625	01 17 00911
BA-ABS 2708 09T	01 17 03599	270 X 80 X 85	01 17 03604	01 17 03609	01 17 00625	01 17 00911
BA-PC 2708 09T	01 17 03600	270 X 80 X 85	01 17 03604	01 17 03609	01 17 00625	01 17 00911

TRIBOX™ HEAVY SERIES

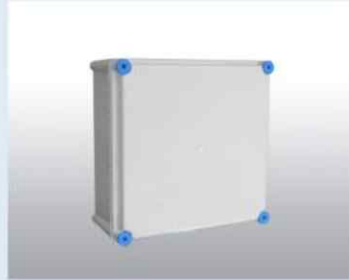
HEAVY 2819 13G



HEAVY 2819 17G



HEAVY 2828 13G



HEAVY 2828 17G



HEAVY 2819 13T



HEAVY 2819 17T



HEAVY 2828 13T



HEAVY 2828 17T



HEAVY 3828 13G



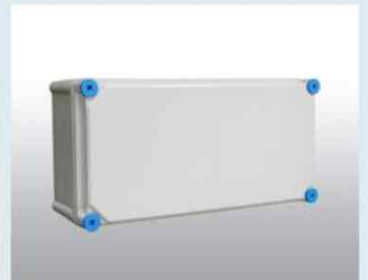
HEAVY 3828 17G



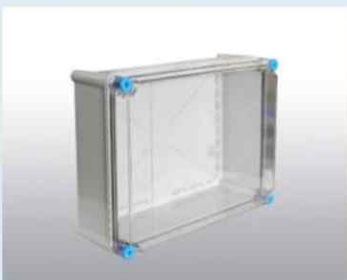
HEAVY 5638 18G



HEAVY 3819 13G



HEAVY 3828 13T





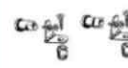


HEAVY 3828 17T



HEAVY 5638 18T



TRIBOX™ HEAVY SERIES

Type	Article No.	Size (H X W X D) mm	 Mounting Plate	 Mounting Clamp	 Hinge	 Cover Screw	 Window
HE-ABS 2819 13G	01 17 00569	280 X 190 X 130	01 17 00616	01 17 00617	01 17 00625	01 17 00912	01 17 00909
HE-PC 2819 13G	01 17 00592	280 X 190 X 130	01 17 00616	01 17 00617	01 17 00625	01 17 00912	01 17 00909
HE-ABS 2819 13T	01 17 00584	280 X 190 X 130	01 17 00616	01 17 00617	01 17 00625	01 17 00912	01 17 00909
HE-PC 2819 13T	01 17 00600	280 X 190 X 130	01 17 00616	01 17 00617	01 17 00625	01 17 00912	01 17 00909
HE-ABS 2819 17G	01 17 02287	280 X 190 X 175	01 17 00616	01 17 00617	01 17 00625	01 17 00913	01 17 00909
HE-PC 2819 17G	01 17 02288	280 X 190 X 175	01 17 00616	01 17 00617	01 17 00625	01 17 00913	01 17 00909
HE-ABS 2819 17T	01 17 02289	280 X 190 X 175	01 17 00616	01 17 00617	01 17 00625	01 17 00913	01 17 00909
HE-PC 2819 17T	01 17 02290	280 X 190 X 175	01 17 00616	01 17 00617	01 17 00625	01 17 00913	01 17 00909
HE-ABS 2828 13G	01 17 00580	280 X 280 X 130	01 17 00618	01 17 00619	01 17 00625	01 17 00912	01 17 00909
HE-PC 2828 13G	01 17 00596	280 X 280 X 130	01 17 00618	01 17 00619	01 17 00625	01 17 00912	01 17 00909
HE-ABS 2828 13T	01 17 00588	280 X 280 X 130	01 17 00618	01 17 00619	01 17 00625	01 17 00912	01 17 00909
HE-PC 2828 13T	01 17 00604	280 X 280 X 130	01 17 00618	01 17 00619	01 17 00625	01 17 00912	01 17 00909
HE-ABS 2828 17G	01 17 02291	280 X 280 X 175	01 17 00618	01 17 00619	01 17 00625	01 17 00913	01 17 00909
HE-PC 2828 17G	01 17 02292	280 X 280 X 175	01 17 00618	01 17 00619	01 17 00625	01 17 00913	01 17 00909
HE-ABS 2828 17T	01 17 02293	280 X 280 X 175	01 17 00618	01 17 00619	01 17 00625	01 17 00913	01 17 00909
HE-PC 2828 17T	01 17 02294	280 X 280 X 175	01 17 00618	01 17 00619	01 17 00625	01 17 00913	01 17 00909
HE-ABS 3819 13G	01 17 02738	380 X 190 X 130	01 17 03605	01 17 03610	01 17 00625	01 17 00912	01 17 00909
HE-PC 3819 13G	01 17 02740	380 X 190 X 130	01 17 03605	01 17 03610	01 17 00625	01 17 00912	01 17 00909
HE-ABS 3819 13T	01 17 02739	380 X 190 X 130	01 17 03605	01 17 03610	01 17 00625	01 17 00912	01 17 00909
HE-PC 3819 13T	01 17 02741	380 X 190 X 130	01 17 03605	01 17 03610	01 17 00625	01 17 00912	01 17 00909
HE-ABS 3828 13G	01 17 01190	380 X 280 X 135	01 17 00620	01 17 00621	01 17 00625	01 17 00912	01 17 00909
HE-PC 3828 13G	01 17 01191	380 X 280 X 135	01 17 00620	01 17 00621	01 17 00625	01 17 00912	01 17 00909
HE-ABS 3828 13T	01 17 01192	380 X 280 X 135	01 17 00620	01 17 00621	01 17 00625	01 17 00912	01 17 00909
HE-PC 3828 13T	01 17 01193	380 X 280 X 135	01 17 00620	01 17 00621	01 17 00625	01 17 00912	01 17 00909
HE-ABS 3828 17G	01 17 00581	380 X 280 X 175	01 17 00620	01 17 00621	01 17 00625	01 17 00913	01 17 00909
HE-PC 3828 17G	01 17 00597	380 X 280 X 175	01 17 00620	01 17 00621	01 17 00625	01 17 00913	01 17 00909
HE-ABS 3828 17T	01 17 00589	380 X 280 X 175	01 17 00620	01 17 00621	01 17 00625	01 17 00913	01 17 00909
HE-PC 3828 17T	01 17 00605	380 X 280 X 175	01 17 00620	01 17 00621	01 17 00625	01 17 00913	01 17 00909
HE-ABS 5638 18G	01 17 00582	560 X 380 X 180	01 17 00622	01 17 00623	01 17 00625	01 17 00913	01 17 00909
HE-PC 5638 18G	01 17 00598	560 X 380 X 180	01 17 00622	01 17 00623	01 17 00625	01 17 00913	01 17 00909
HE-ABS 5638 18T	01 17 00590	560 X 380 X 180	01 17 00622	01 17 00623	01 17 00625	01 17 00913	01 17 00909
HE-PC 5638 18T	01 17 00606	560 X 380 X 180	01 17 00622	01 17 00623	01 17 00625	01 17 00913	01 17 00909

Polycarbonate and ABS range has been designed to house and protect electrical and electronic components in hostile environments. Cover available are opaque or transparent "smoke grey". A selective range of accessories is also available including a hinged door lock, mounting plate & mounting clamps.

Dimensions of enclosures range from 85x83x60 mm to 560x380x180 mm.

Other Product Programs



Trinity Touch Pvt. Ltd.

www.trinitytouch.com

INDIA

D-10, Defence Colony, New Delhi 110024 INDIA
Tel: +91.11.30895900 Fax: +91.11.30895998
E-mail: postmaster@trinitytouch.com

Works & Warehouse

Prithla- Dudhola road, Dudhola Distt. Palwal 121102,
Haryana INDIA
Tel: +91.11.30895900 E-mail: sales@trinitytouch.com

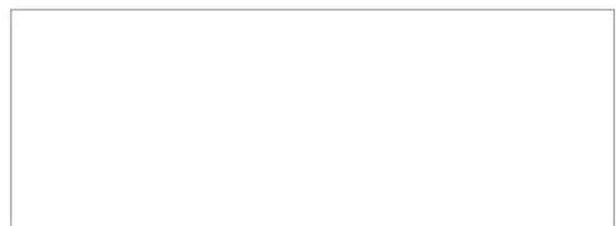
 For further enquiry
Call us at: **1800 2000 140**

Trinity Touch (EUROPE) Ltd.

www.trinitytouch.co.uk

UK

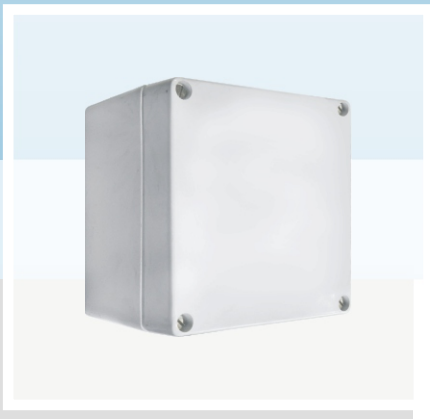
UNIT-1, Tyson Courtyard, Weldon South Industrial Estate, Corby,
Northants, NN18 8AZ, UK
Tel: +44 (0) 1536 400 641 Fax: +44 (0) 1536 268 043
E-mail: gbsales@trinitytouch.com



TRIBOX[®]

ENCLOSURE PROGRAM

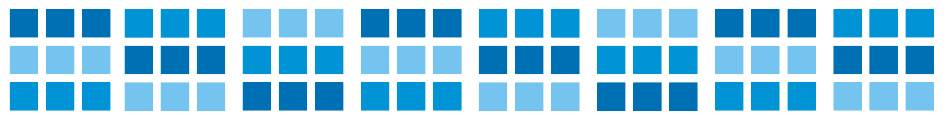
FIBERGLASS REINFORCED POLYESTER ENCLOSURES



- NON-CORROSIVE
- NON-CONDUCTIVE
- HIGH STRENGTH



SIMPLY SOLUTIONS



Fiberglass Reinforced Polyester (FRP/GRP) Enclosures

TRIBOX®

NEW



Features

- Non-corrosive.
- Non-conductive.
- High strength.
- Easy to modify and longer life cycle compared to steel.
- Rigid design with back panel inserts plus stainless steel mounting brackets and a PU gasket system encased in a continuous channel on the cover.



Application

Enclose and protect electrical and electronic controls (LT panels, Solar, Metering etc.) instruments or components for indoor and outdoor applications. Especially well suited for extreme temperature and corrosive environments.

Product Description

Article No.	Type	Dimensions (WxHxD) mm
01 17 06376	Heavy	850x700x300 mm
01 17 06378	Heavy	650x550x250 mm
01 17 05596	Basic	122x122x90 mm
Cover Type		
Metal snap latch hinged opaque cover		
Color		
RAL 7035 - Grey		
Material		
Fiberglass Reinforced Polyester (FRP/GRP)		

Additional Materials
<ul style="list-style-type: none"> • 304 stainless steel external hardware (hinges, latches and fasteners) • 304 stainless steel mounting brackets • 304 stainless steel internal hardware
Mounting
Stainless steel feet fastened to back side brass inserts
Gasket
Polyurethane Formed-In-Place (FIP) gasket system
UV Resistance
≥2000 Hour

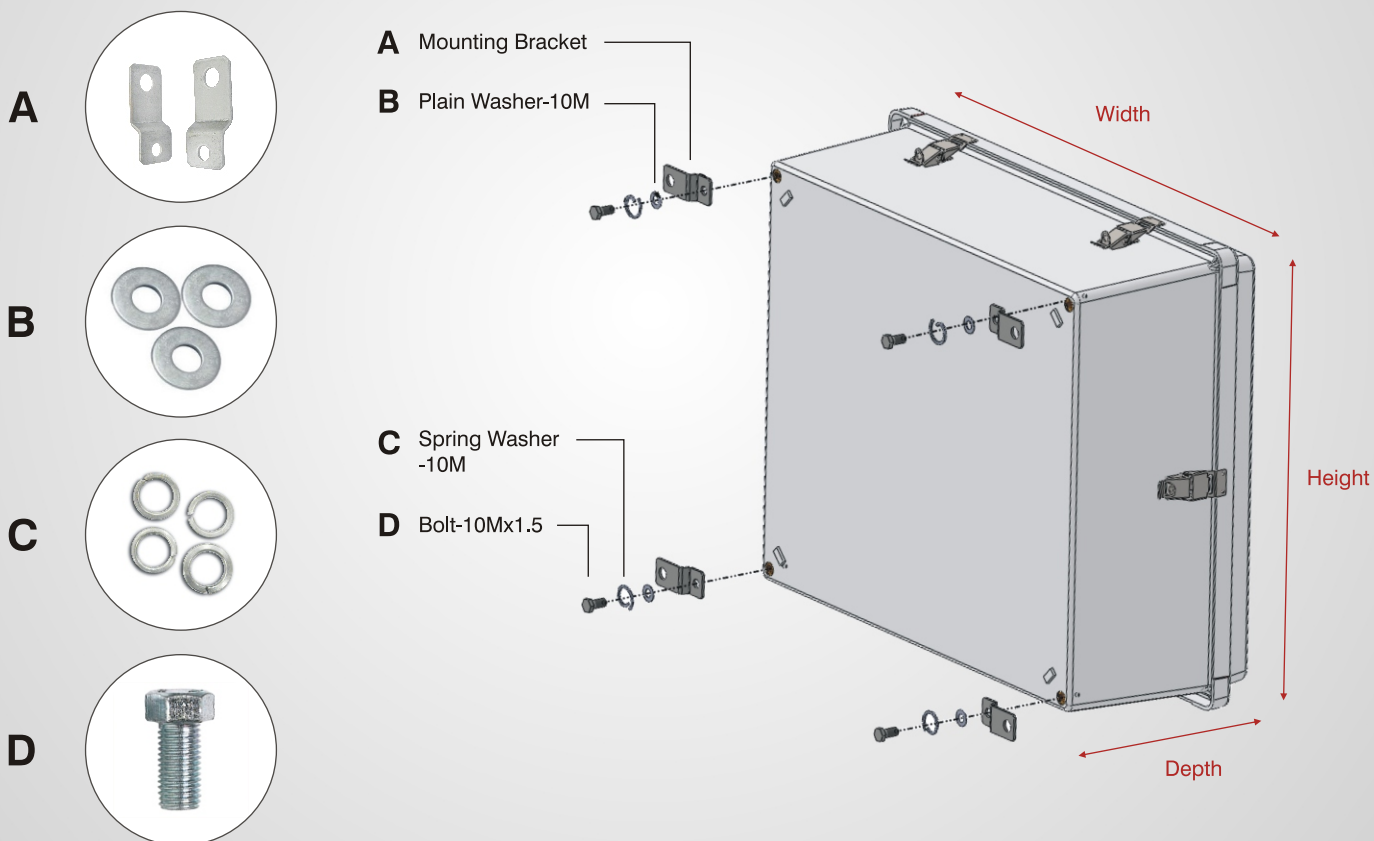
Raw Material Properties and Its Value

SN	Properties	Standard	Unit	Value	Result
1	Fire retardancy	UL 94	Class	V0	V0
2	Water absorption	ISO 62	%	≤0.20	0.18
3	Density	GB/T 1033.1-2008	g/cm ³	1.70-1.80	1.79
4	Tensile strength	ISO 527	Mpa	≥65	88.63
5	Impact strength	ISO 179	KJ/m ²	≥70	77.25
6	Flexural strength	ISO 178	Mpa	≥160	174.2
7	Flexural modulus	ISO 178	Mpa	≥10000	10813
8	Tracking resistance	IEC 60112	-	≥650	700
9	Surface resistance	IEC 60093	Ohm	≥1.0x10 ¹²	1.5x10 ¹²
10	Specific volume resistance	IEC 60093	Ohm.cm	≥1.0x10 ¹⁴	2.1x10 ¹⁴
11	Heat distortion temperature	ISO-75	°C	≥200	230
12	Die electric strength	IEC 60243	KV/mm	≥24	25
13	Arc resistance	GB/T 1411-2002	S	≥185	186
14	UV resistance	ASTM G-154	Hour	≥2000	2000
15	Temp resistance continuously	-	°C	-50 to +150	OK
16	Fibre content	ISO 1172	%	25±1	25.42

For guidance only

Subject to change in the interest of technical progress

Mounting Arrangement



Trinity Touch Pvt. Ltd.

www.trinitytouch.com

INDIA: Corporate Office

D-10, Defence Colony, New Delhi 110024 INDIA

Tel: +91.11.30895900/+91.11.71200900

Fax: +91.11.30895998/+91.11.71200998

E-mail: postmaster@trinitytouch.com

Works & Warehouse

Prithla-Dudhola road, Dudhola Distt. Palwal 121102, Haryana INDIA

Tel: +91.1275.398500

E-mail: sales@trinitytouch.com

Branch

2nd Floor, Umiya Land Mark 10/7, Lavelle Road, Bangalore 560001 INDIA

Tel: +91.80.30454200

Trinity Touch (EUROPE) Ltd.

www.trinitytouch.co.uk

UK

Unit-L, Tyson Courtyard, Weldon South Industrial Estate, Corby, Northants, NN18 8AZ, UK

Tel: +44 (0) 1536 400 641

Fax: +44 (0) 1536 268 043

E-mail: gbsales@trinitytouch.com

Trinity Touch (South East Asia) Pte. Ltd.

SINGAPORE

No.72, Eunos Ave 7, #06-03 Singapore Handicrafts Building, Singapore 409570



Scan & Save
Catalog in PDF

Distributed by :

TRIBOX®

ENCLOSURE PROGRAM

THERMOPLASTIC ENCLOSURES

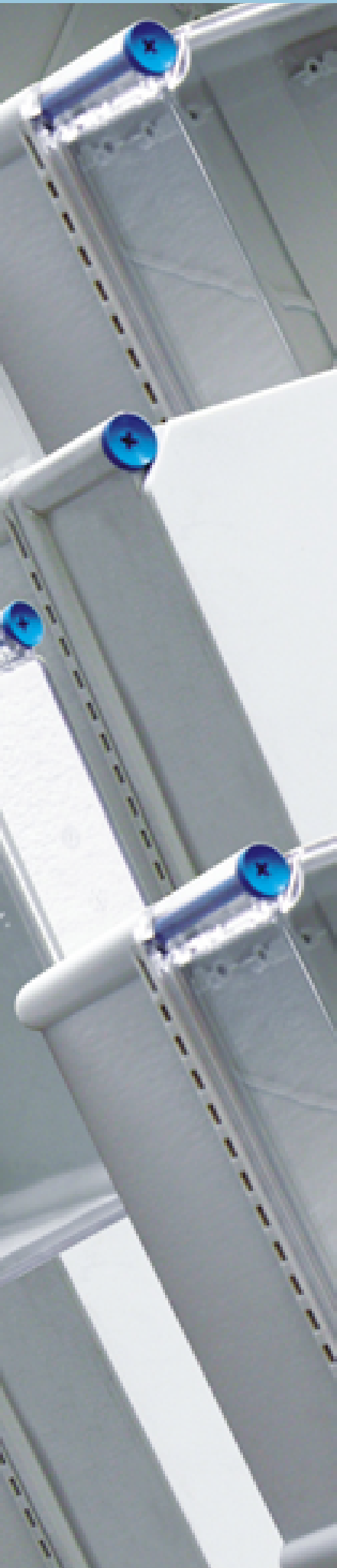
• BASIC SERIES

• HEAVY SERIES



SIMPLY SOLUTIONS



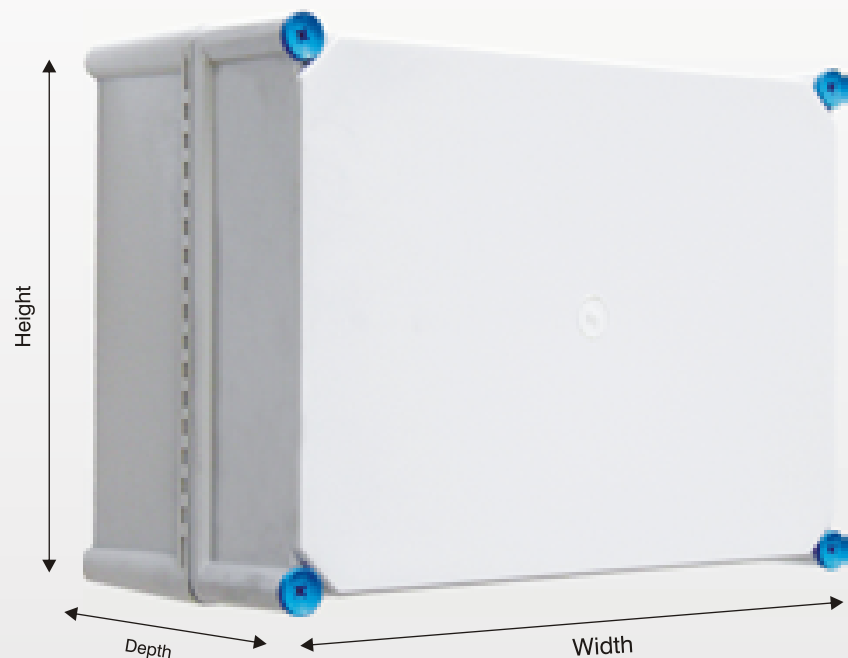


Thermoplastic Enclosures

TRIBOX®



Our Basic and Heavy Series caters to a market which requires compact and robust enclosures. We use a high quality ABS and Polycarbonate material and provide Ingress Protection IP 66/67 along with protection against mechanical impacts IK 07 for ABS and IK 08 for Polycarbonate. A High quality gasket, well engineered screws and tested box design make our Basic & Heavy series a good solution for all the demand placed on compact enclosures.



Benefits

- Easy machining with normal tools.
- Easy colouring through pigmentation.
- Low weight.
- Good resistance to chemical attack.
- Excellent insulating properties.

Summary of **TRIBOX**® Series

SN	Box Size	Dimension (WxHxD) mm	Material
1	Basic 0808	85 x 83 x 60 mm	ABS / Polycarbonate
2	Basic 1010	102 x 100 x 60 mm	ABS / Polycarbonate
3	Basic 1308	130 x 80 x 60 mm	ABS / Polycarbonate
4	Basic 1313	130 x 130 x 75 mm	ABS / Polycarbonate
5	Basic 1808	180 x 80 x 85 mm	ABS / Polycarbonate
6	Basic 1813	180 x 130 x 100 mm	ABS / Polycarbonate
7	Basic 1818	180 x 180 x 100 mm	ABS / Polycarbonate
8	Basic 2708	270 x 80 x 85 mm	ABS / Polycarbonate
9	Heavy 2819 13	280 x 190 x 130 mm	ABS / Polycarbonate
10	Heavy 2819 17	280 x 190 x 170 mm	ABS / Polycarbonate
11	Heavy 2828 13	280 x 280 x 130 mm	ABS / Polycarbonate
12	Heavy 2828 17	280 x 280 x 175 mm	ABS / Polycarbonate
13	Heavy 3819 13	380 x 190 x 130 mm	ABS / Polycarbonate
14	Heavy 3828 13	380 x 280 x 130 mm	ABS / Polycarbonate
15	Heavy 3828 17	380 x 280 x 175 mm	ABS / Polycarbonate
16	Heavy 5638 18	560 x 380 x 180 mm	ABS / Polycarbonate

Technical Information

SN	Property	ABS	Polycarbonate
1	Ingress protection (EN 60529)	IP 66/67	IP 66/67
2	Impact resistance (EN 62262)	IK 07	IK 08
3	Temperature range - continuous	-20 to +60°C	-40 to +80°C
4	Electrical insulation	Insulated	Insulated
5	Enclosure flammability rating	UL 94-HB	UL 94-V0
6	Glow wire test	650°C	960°C
7	Non-toxicity	Halogen free	Halogen free
8	UV resistance (UL746C)	-	YES
	Conformity to standards		
9	Empty enclosure for low voltage switchgear	YES	IEC 62208
10	RoHS	YES	YES
11	CE	YES	YES

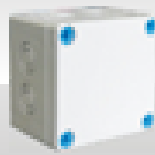
Data subject to change without prior notice

TRIBOX® Basic Series

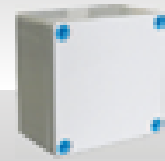
BASIC 0808 06G



BASIC 0808 06G (With K.O.)



BASIC 1010 06G



BASIC 0808 06T



BASIC 0808 06T (With K.O.)



BASIC 1010 06T



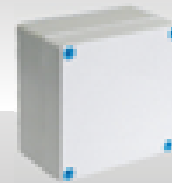
BASIC 1010 06G (With K.O.)



BASIC 1308 G



BASIC 1313 G



BASIC 1010 06T (With K.O.)



BASIC 1308 T



BASIC 1313 T



BASIC 1813 G



BASIC 1818 G



BASIC 1808 09G



BASIC 1813 T







BASIC 1818 T



BASIC 2708 09G



TRIBOX® Basic Series

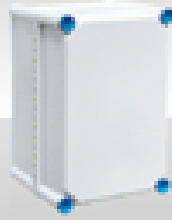
SN	Type	Article No.	Size (WxHxD) mm	 Mounting Plate	 Mounting Clamp	 Hinge	 Cover Screw
1	BA-ABS 0808 06G	01 17 03577	85 x 83 x 60	01 17 03601	01 17 03606	01 17 00624	01 17 00910
2	BA-PC 0808 06G	01 17 03578	85 x 83 x 60	01 17 03601	01 17 03606	01 17 00624	01 17 00910
3	BA-ABS 0808 06T	01 17 03579	85 x 83 x 60	01 17 03601	01 17 03606	01 17 00624	01 17 00910
4	BA-PC 0808 06T	01 17 03580	85 x 83 x 60	01 17 03601	01 17 03606	01 17 00624	01 17 00910
5	BA-ABS 0808 06G (With K.O.)	01 17 03581	85 x 83 x 60	01 17 03601	01 17 03606	01 17 00624	01 17 00910
6	BA-PC 0808 06G (With K.O.)	01 17 03582	85 x 83 x 60	01 17 03601	01 17 03606	01 17 00624	01 17 00910
7	BA-ABS 0808 06T (With K.O.)	01 17 03583	85 x 83 x 60	01 17 03601	01 17 03606	01 17 00624	01 17 00910
8	BA-PC 0808 06T (With K.O.)	01 17 03584	85 x 83 x 60	01 17 03601	01 17 03606	01 17 00624	01 17 00910
9	BA-ABS 1010 06G	01 17 03585	102 x 100 x 60	01 17 03602	01 17 03607	01 17 00624	01 17 00910
10	BA-PC 1010 06G	01 17 03586	102 x 100 x 60	01 17 03602	01 17 03607	01 17 00624	01 17 00910
11	BA-ABS 1010 06T	01 17 03587	102 x 100 x 60	01 17 03602	01 17 03607	01 17 00624	01 17 00910
12	BA-PC 1010 06T	01 17 03588	102 x 100 x 60	01 17 03602	01 17 03607	01 17 00624	01 17 00910
13	BA-ABS 1010 06G (With K.O.)	01 17 03589	102 x 100 x 60	01 17 03602	01 17 03607	01 17 00624	01 17 00910
14	BA-PC 1010 06G (With K.O.)	01 17 03590	102 x 100 x 60	01 17 03602	01 17 03607	01 17 00624	01 17 00910
15	BA-ABS 1010 06T (With K.O.)	01 17 03591	102 x 100 x 60	01 17 03602	01 17 03607	01 17 00624	01 17 00910
16	BA-PC 1010 06T (With K.O.)	01 17 03592	102 x 100 x 60	01 17 03602	01 17 03607	01 17 00624	01 17 00910
17	BA-ABS 1308G	01 17 00571	130 x 80 x 60	01 17 00608	01 17 00609	01 17 00624	01 17 00910
18	BA-PC 1308G	01 17 00594	130 x 80 x 60	01 17 00608	01 17 00609	01 17 00624	01 17 00910
19	BA-ABS 1308T	01 17 00586	130 x 80 x 60	01 17 00608	01 17 00609	01 17 00624	01 17 00910
20	BA-PC 1308T	01 17 00602	130 x 80 x 60	01 17 00608	01 17 00609	01 17 00624	01 17 00910
21	BA-ABS 1313G	01 17 00568	130 x 130 x 75	01 17 00610	01 17 00611	01 17 00624	01 17 00911
22	BA-PC 1313G	01 17 00591	130 x 130 x 75	01 17 00610	01 17 00611	01 17 00624	01 17 00911
23	BA-ABS 1313T	01 17 00583	130 x 130 x 75	01 17 00610	01 17 00611	01 17 00624	01 17 00911
24	BA-PC 1313T	01 17 00599	130 x 130 x 75	01 17 00610	01 17 00611	01 17 00624	01 17 00911
25	BA-ABS 1808 09G	01 17 03593	180 x 80 x 85	01 17 03603	01 17 03608	01 17 00625	01 17 00911
26	BA-PC 1808 09G	01 17 03594	180 x 80 x 85	01 17 03603	01 17 03608	01 17 00625	01 17 00911
27	BA-ABS 1808 09T	01 17 03595	180 x 80 x 85	01 17 03603	01 17 03608	01 17 00625	01 17 00911
28	BA-PC 1808 09T	01 17 03596	180 x 80 x 85	01 17 03603	01 17 03608	01 17 00625	01 17 00911
29	BA-ABS 1813G	01 17 00570	180 x 130 x 100	01 17 00612	01 17 00613	01 17 00624	01 17 00911
30	BA-PC 1813G	01 17 00593	180 x 130 x 100	01 17 00612	01 17 00613	01 17 00624	01 17 00911
31	BA-ABS 1813T	01 17 00585	180 x 130 x 100	01 17 00612	01 17 00613	01 17 00624	01 17 00911
32	BA-PC 1813T	01 17 00601	180 x 130 x 100	01 17 00612	01 17 00613	01 17 00624	01 17 00911
33	BA-ABS 1818G	01 17 00572	180 x 180 x 100	01 17 00614	01 17 00615	01 17 00624	01 17 00911
34	BA-PC 1818G	01 17 00595	180 x 180 x 100	01 17 00614	01 17 00615	01 17 00624	01 17 00911
35	BA-ABS 1818T	01 17 00587	180 x 180 x 100	01 17 00614	01 17 00615	01 17 00624	01 17 00911
36	BA-PC 1818T	01 17 00603	180 x 180 x 100	01 17 00614	01 17 00615	01 17 00624	01 17 00911
37	BA-ABS 2708 09G	01 17 03597	270 x 80 x 85	01 17 03604	01 17 03609	01 17 00625	01 17 00911
38	BA-PC 2708 09G	01 17 03598	270 x 80 x 85	01 17 03604	01 17 03609	01 17 00625	01 17 00911
39	BA-ABS 2708 09T	01 17 03599	270 x 80 x 85	01 17 03604	01 17 03609	01 17 00625	01 17 00911
40	BA-PC 2708 09T	01 17 03600	270 x 80 x 85	01 17 03604	01 17 03609	01 17 00625	01 17 00911

TRIBOX® Heavy Series

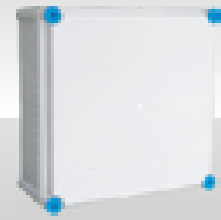
HEAVY 2819 13G



HEAVY 2819 17G



HEAVY 2828 13G



HEAVY 2819 13T



HEAVY 2819 17T



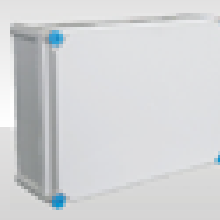
HEAVY 2828 13T



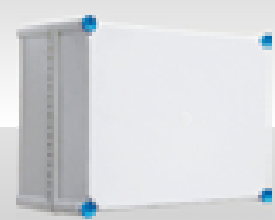
HEAVY 2828 17G



HEAVY 3828 13G



HEAVY 3828 17G



HEAVY 2828 17T



HEAVY 3828 13T



HEAVY 3828 17T



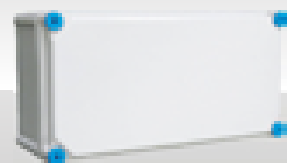
HEAVY 5638 18G








HEAVY 5638 18T



HEAVY 3819 13G



TRIBOX® Heavy Series

SN	Type	Article No.	Size (WxHxD) mm	 Mounting Plate	 Mounting Clamp	 Hinge	 Cover Screw	 Window
1	HE-ABS 2819 13G	01 17 00569	280 x 190 x 130	01 17 00616	01 17 00617	01 17 00625	01 17 00912	01 17 00909
2	HE-PC 2819 13G	01 17 00592	280 x 190 x 130	01 17 00616	01 17 00617	01 17 00625	01 17 00912	01 17 00909
3	HE-ABS 2819 13T	01 17 00584	280 x 190 x 130	01 17 00616	01 17 00617	01 17 00625	01 17 00912	01 17 00909
4	HE-PC 2819 13T	01 17 00600	280 x 190 x 130	01 17 00616	01 17 00617	01 17 00625	01 17 00912	01 17 00909
5	HE-ABS 2819 17G	01 17 02287	280 x 190 x 175	01 17 00616	01 17 00617	01 17 00625	01 17 00913	01 17 00909
6	HE-PC 2819 17G	01 17 02288	280 x 190 x 175	01 17 00616	01 17 00617	01 17 00625	01 17 00913	01 17 00909
7	HE-ABS 2819 17T	01 17 02289	280 x 190 x 175	01 17 00616	01 17 00617	01 17 00625	01 17 00913	01 17 00909
8	HE-PC 2819 17T	01 17 02290	280 x 190 x 175	01 17 00616	01 17 00617	01 17 00625	01 17 00913	01 17 00909
9	HE-ABS 2828 13G	01 17 00580	280 x 280 x 130	01 17 00618	01 17 00619	01 17 00625	01 17 00912	01 17 00909
10	HE-PC 2828 13G	01 17 00596	280 x 280 x 130	01 17 00618	01 17 00619	01 17 00625	01 17 00912	01 17 00909
11	HE-ABS 2828 13T	01 17 00588	280 x 280 x 130	01 17 00618	01 17 00619	01 17 00625	01 17 00912	01 17 00909
12	HE-PC 2828 13T	01 17 00604	280 x 280 x 130	01 17 00618	01 17 00619	01 17 00625	01 17 00912	01 17 00909
13	HE-ABS 2828 17G	01 17 02291	280 x 280 x 175	01 17 00618	01 17 00619	01 17 00625	01 17 00913	01 17 00909
14	HE-PC 2828 17G	01 17 02292	280 x 280 x 175	01 17 00618	01 17 00619	01 17 00625	01 17 00913	01 17 00909
15	HE-ABS 2828 17T	01 17 02293	280 x 280 x 175	01 17 00618	01 17 00619	01 17 00625	01 17 00913	01 17 00909
16	HE-PC 2828 17T	01 17 02294	280 x 280 x 175	01 17 00618	01 17 00619	01 17 00625	01 17 00913	01 17 00909
17	HE-ABS 3819 13G	01 17 02738	380 x 190 x 130	01 17 03605	01 17 03610	01 17 00625	01 17 00912	01 17 00909
18	HE-PC 3819 13G	01 17 02740	380 x 190 x 130	01 17 03605	01 17 03610	01 17 00625	01 17 00912	01 17 00909
19	HE-ABS 3819 13T	01 17 02739	380 x 190 x 130	01 17 03605	01 17 03610	01 17 00625	01 17 00912	01 17 00909
20	HE-PC 3819 13T	01 17 02741	380 x 190 x 130	01 17 03605	01 17 03610	01 17 00625	01 17 00912	01 17 00909
21	HE-ABS 3828 13G	01 17 01190	380 x 280 x 135	01 17 00620	01 17 00621	01 17 00625	01 17 00912	01 17 00909
22	HE-PC 3828 13G	01 17 01191	380 x 280 x 135	01 17 00620	01 17 00621	01 17 00625	01 17 00912	01 17 00909
23	HE-ABS 3828 13T	01 17 01192	380 x 280 x 135	01 17 00620	01 17 00621	01 17 00625	01 17 00912	01 17 00909
24	HE-PC 3828 13T	01 17 01193	380 x 280 x 135	01 17 00620	01 17 00621	01 17 00625	01 17 00912	01 17 00909
25	HE-ABS 3828 17G	01 17 00581	380 x 280 x 175	01 17 00620	01 17 00621	01 17 00625	01 17 00913	01 17 00909
26	HE-PC 3828 17G	01 17 00597	380 x 280 x 175	01 17 00620	01 17 00621	01 17 00625	01 17 00913	01 17 00909
27	HE-ABS 3828 17T	01 17 00589	380 x 280 x 175	01 17 00620	01 17 00621	01 17 00625	01 17 00913	01 17 00909
28	HE-PC 3828 17T	01 17 00605	380 x 280 x 175	01 17 00620	01 17 00621	01 17 00625	01 17 00913	01 17 00909
29	HE-ABS 5638 18G	01 17 00582	560 x 380 x 180	01 17 00622	01 17 00623	01 17 00625	01 17 00912	01 17 00909
30	HE-PC 5638 18G	01 17 00598	560 x 380 x 180	01 17 00622	01 17 00623	01 17 00625	01 17 00912	01 17 00909
31	HE-ABS 5638 18T	01 17 00590	560 x 380 x 180	01 17 00622	01 17 00623	01 17 00625	01 17 00912	01 17 00909
32	HE-PC 5638 18T	01 17 00606	560 x 380 x 180	01 17 00622	01 17 00623	01 17 00625	01 17 00912	01 17 00909

Polycarbonate and ABS range has been designed to house and protect electrical and electronic components in hostile environments. Cover available are opaque or transparent “smoke grey”. A selective range of accessories is also available including a hinged door lock, mounting plate & mounting clamps.

Dimensions of enclosures range from 85x83x60 mm to 560x380x180 mm.

Combination Units

A bigger range and size can be achieved by using specially engineered combination system made by combining **TRIBOX** enclosures. It comprises of special set of heavy series **TRIBOX** enclosures. The modular system is designed to achieve IP 65 protection which makes the system fit for outdoor use. Our modular system of enclosures is fit for use in low voltage switchgear.

Special Features



Trinity Touch Pvt. Ltd.

www.trinitytouch.com

INDIA: Corporate Office

D-10, Defence Colony, New Delhi 110024 INDIA
Tel: +91.11.30895900/+91.11.71200900
Fax: +91.11.30895998/+91.11.71200998
E-mail: postmaster@trinitytouch.com

Works & Warehouse

Prithla-Dudhola road, Dudhola Distt. Palwal 121102, Haryana INDIA
Tel: +91.1275.398500
E-mail: sales@trinitytouch.com

Branch

2nd Floor, Umiya Land Mark 10/7, Lavelle Road, Bangalore 560001 INDIA
Tel: +91.80.30454200

Trinity Touch (EUROPE) Ltd.

www.trinitytouch.co.uk

UK

Unit-L, Tyson Courtyard, Weldon South Industrial Estate, Corby, Northants, NN18 8AZ, UK
Tel: +44 (0) 1536 400 641
Fax: +44 (0) 1536 268 043
E-mail: gbsales@trinitytouch.com

Trinity Touch (South East Asia) Pte. Ltd.

SINGAPORE

No.72, Eunos Ave 7, #06-03 Singapore Handicrafts Building, Singapore 409570



Scan & Save
Catalog in PDF

Distributed by :

